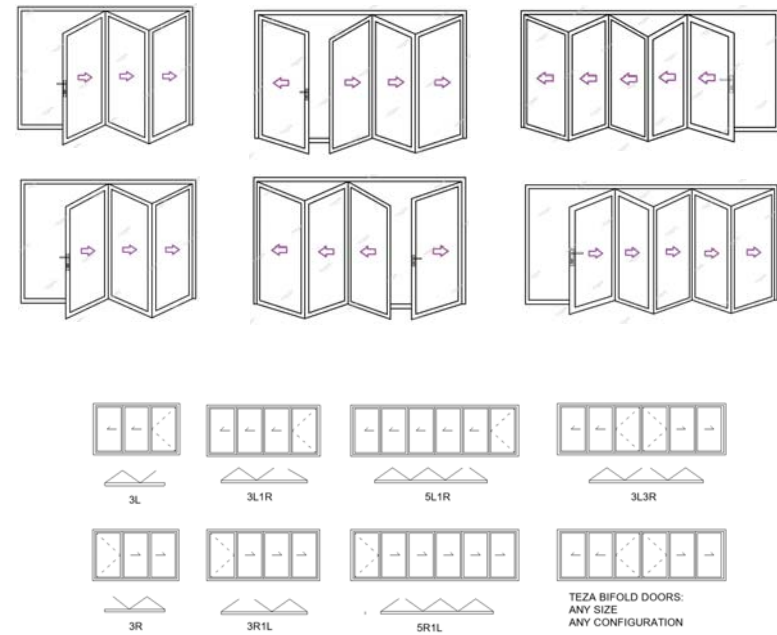
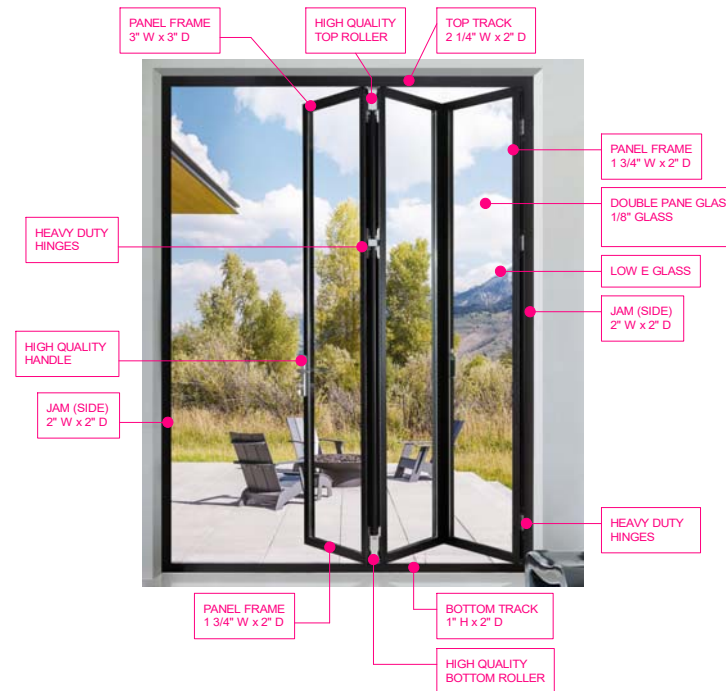


FOLDING DOOR CONFIGURATIONS



60 SERIES FOLDING DOOR DETAILS



TITLE 24

TEZA BIFOLD PATIO DOORS ARE IN COMPLIANCE WITH BUILDING CODE (TITLE 24) THAT HAS BEEN TESTED BY 3RD PARTY. CURRENTLY, WE ARE IN THE PROCESS OF GETTING COMPLIANCE WITH NFRC LAB.

SHGC RATING	U- FACTOR
0.26	0.32

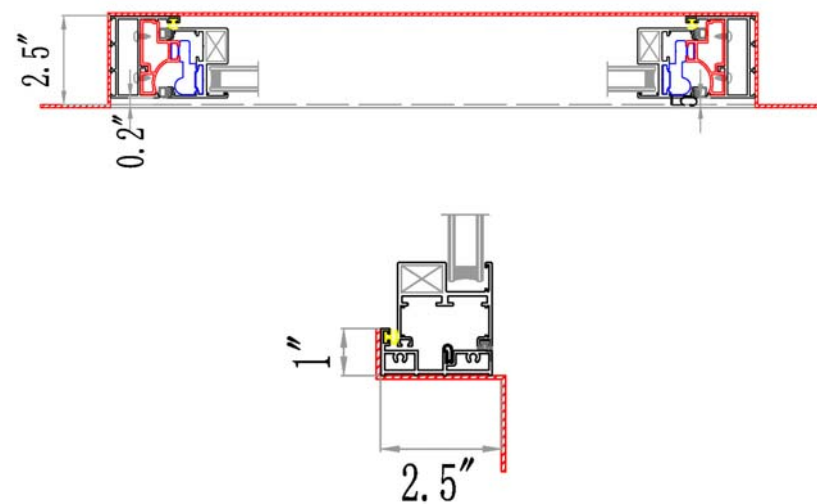
GLASS DETAILS

- DOUBLE TEMPERED GLASS
- EACH PANE 5MM GLASS
- E GLASS 100% BLOCK UV
- FILLED WITH ARGON GAS

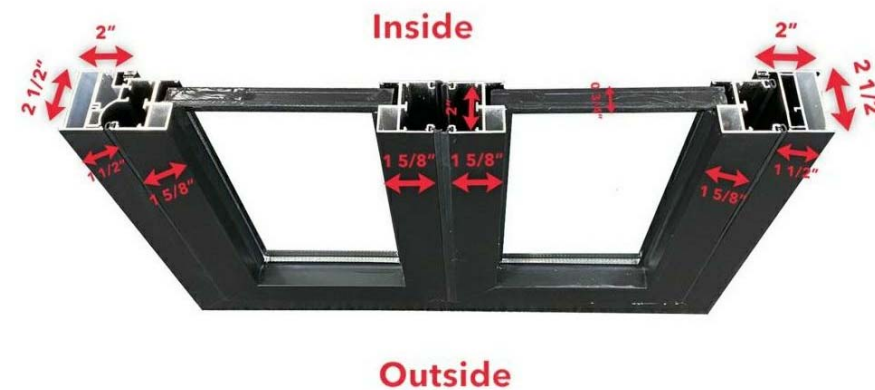


TEZA 60 SERIES BIFOLD DOOR'S SILL PAN

TEZA SILL PAN MADE FROM BEST GRADE OF ALUMINUM WITH POWDER COATED PAINT, AND MATCHES WITH BIFOLD DOOR PAINT AND HEIGHT OF BOTTOM TRACK.



PANEL & GLASS DETAIL

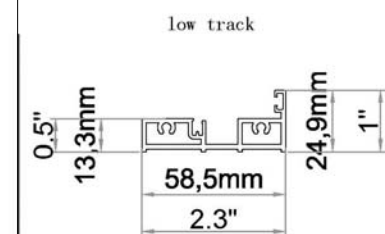
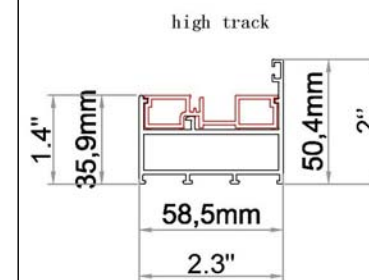


**ROUGH OPENING:**

TEZA BIFOLD DOOR ROUGH OPENING REQUIRES 1/4" ON EACH SIDE OF THE BIFOLD DOOR'S FRAME. A 120" X 80" BIFOLD DOOR WILL USE A ROUGH OPENING OF APPROXIMATELY 120 1/2" X 80 1/4" TO FIT. ALWAYS REMEMBER TO SQUARE UP YOUR DOOR BEFORE YOU NAIL THE FRAME IN PLACE TO ASSURE IT WILL CLOSE PROPERLY.

PANEL DETAILS

TEZA 60 SERIES HAS SUPER SLIM FRAME AND SLIM GLASSES WHICH MAKES IT SUPER LIGHT WEIGHT CAN FOLD OR UNFOLD PANELS WITH MINIMUM FORCE.



**TEZA DOORS**  
20115 NORDHOFF ST  
CHATSWORTH, CA 91311  
WWW.TEZADOORS.COM  
CALL: (818) 818-6001

PROJECT

DOOR TYPE

**TEZA 60 SERIES ALUMINUM FOLDING DOOR**

Notes

1. All dimensions are in feet & inches.
2. All dimensions are to be checked on site.
3. Any discrepancy between the architectural drawing and other drawings relevant for construction should be notified before commencement.